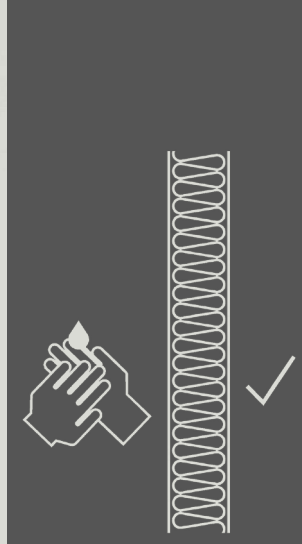
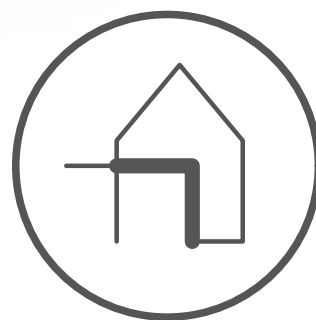


TRI MO TRIMOTERM



ARCHITECTURAL DETAILS
FOOGIENE - food & hygiene
INTERNAL WALL SYSTEM
TRIMOTERM FTV



**VERTICAL
INSTALLATION**

**TRIMOTERM
FTV**

FUNCTION

- FIRE - fire-resistant system
- FOOGIENE - food & hygiene system
- BASE - backing-wall system

APPLICATION

- External Facade
- Internal Wall
- Flat Roof
- External Soffit
- Internal Ceiling
- Pitched Roof

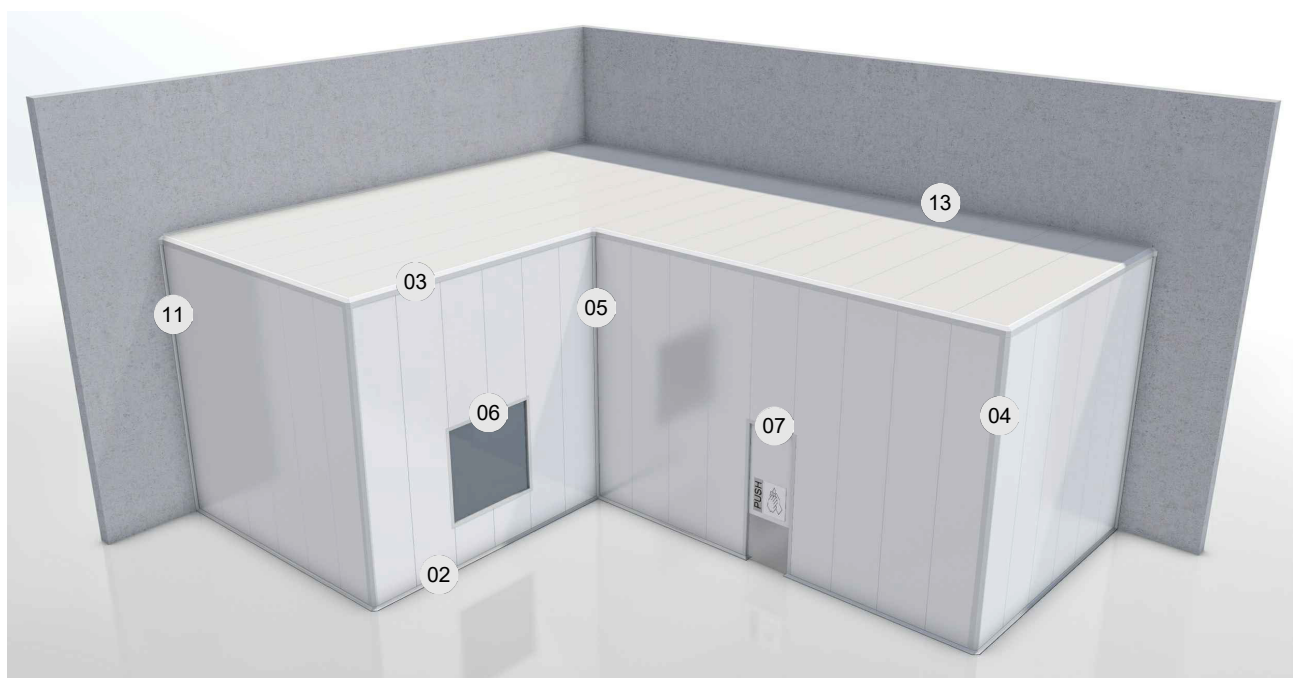


CAD download centre



BIM download centre

- TE-V-02 BASE
- TE-V-03 PARAPET
- TE-V-04 EXTERNAL CORNER
- TE-V-05 INTERNAL CORNER
- TE-V-06 WINDOW
- TE-V-07 DOOR
- TE-V-11 OTHER SYSTEM CONNECTION
- TE-V-13 CEILING



SCHEME

Trimo Group holds full copyrights on the information and details provided on this media, therefore any unauthorized reproduction and distribution is strictly prohibited.



VERTICAL INSTALLATION

TRIMOTERM FTV

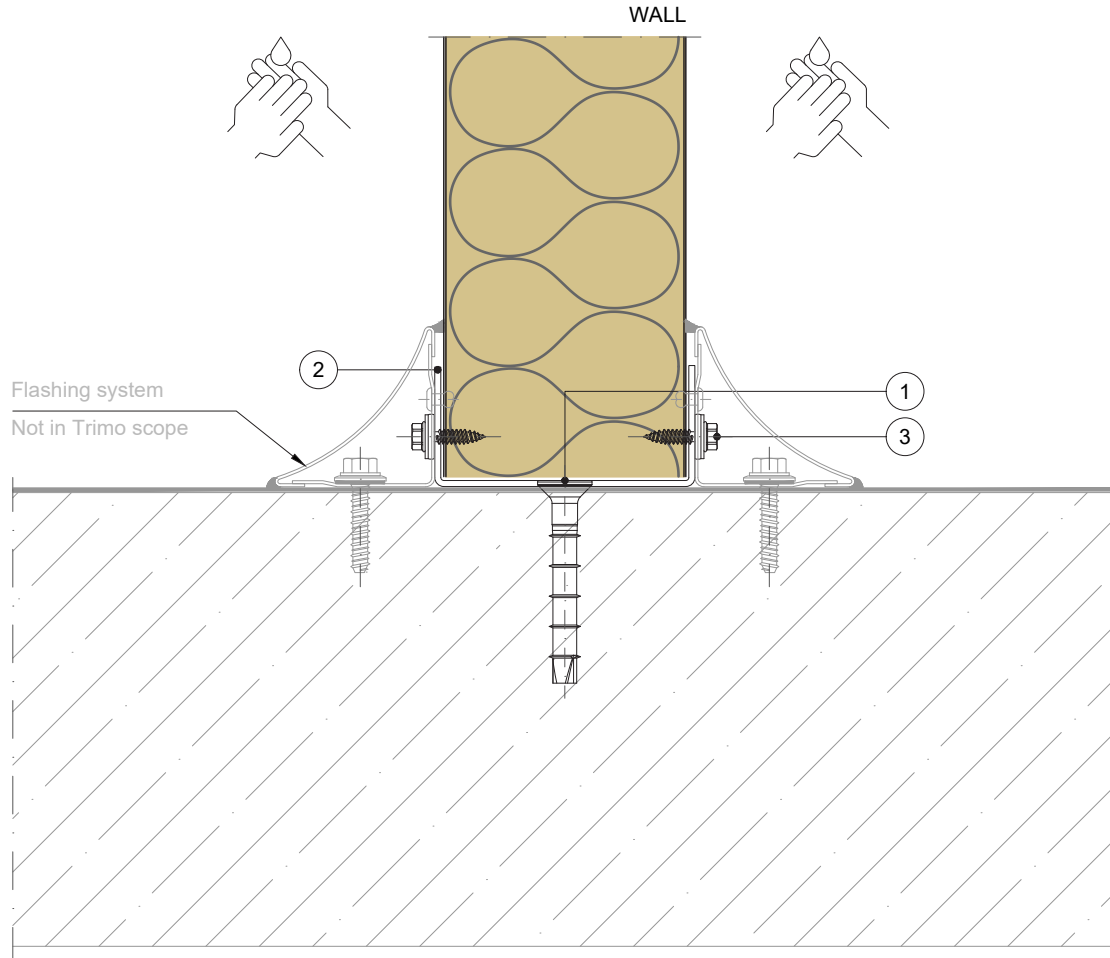
FUNCTION

- FIRE - fire-resistant system
- FOOGIENE - food & hygiene system
- BASE - backing-wall system

APPLICATION

- External Facade
- Internal Wall
- Flat Roof
- External Soffit
- Internal Ceiling
- Pitched Roof

VERTICAL CUT



POS.	ELEMENTS	SCALE: M 1:2.5
1	Metal fixing anchor (depending on material)	
2	Support profile	
3	Fixing screw short	

BASE

Trimo Group holds full copyrights on the information and details provided on this media, therefore any unauthorized reproduction and distribution is strictly prohibited.



VERTICAL INSTALLATION

TRIMOTERM FTV

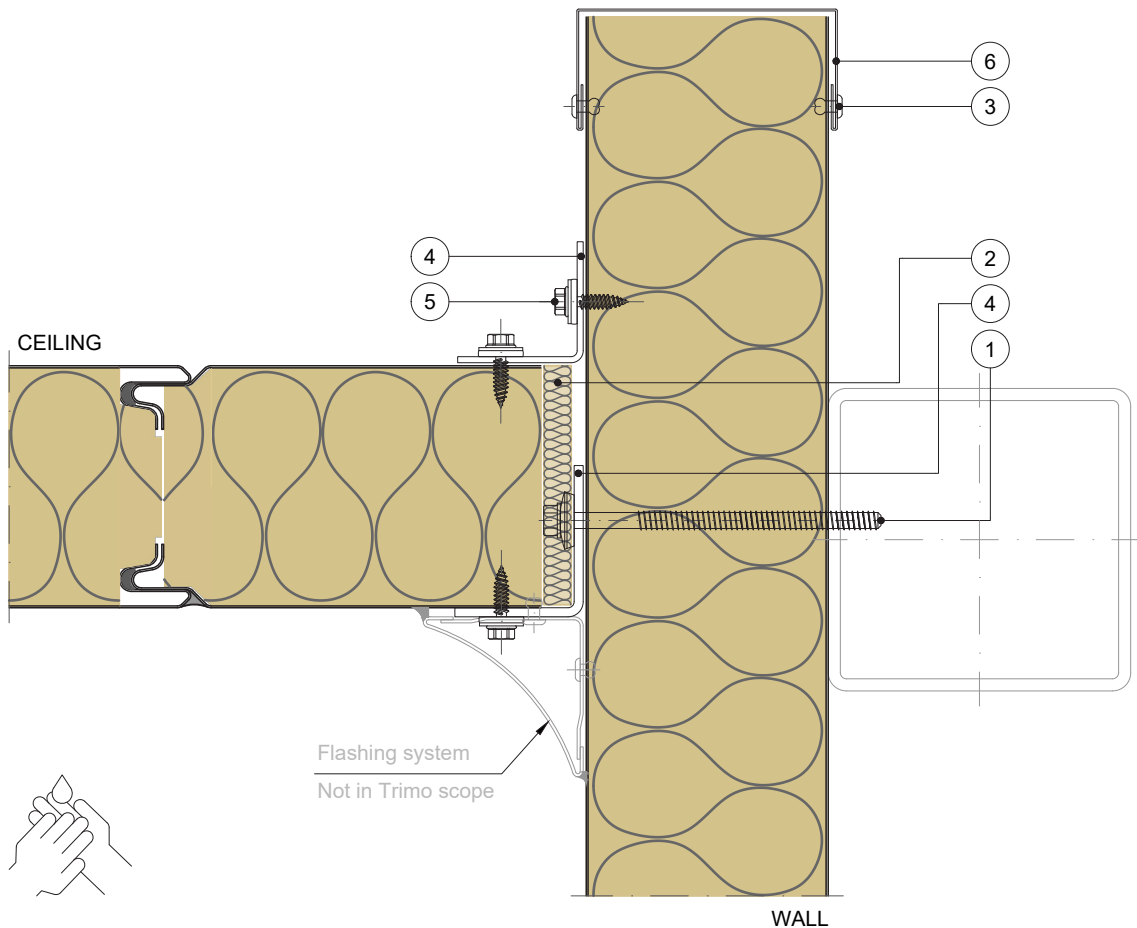
FUNCTION

- FIRE - fire-resistant system
- FOOGIENE - food & hygiene system
- BASE - backing-wall system

APPLICATION

- External Facade
- Internal Wall
- Flat Roof
- External Soffit
- Internal Ceiling
- Pitched Roof

VERTICAL CUT



POS.	ELEMENTS	SCALE: M 1:2.5
1	Fixing screw (long)	
2	Thermal insulation	
3	Blind rivet	
4	Support profile	
5	Fixing screw short	
6	Flashing	

PARAPET

Trimoterm Group holds full copyrights on the information and details provided on this media, therefore any unauthorized reproduction and distribution is strictly prohibited.



VERTICAL INSTALLATION

TRIMOTERM FTV

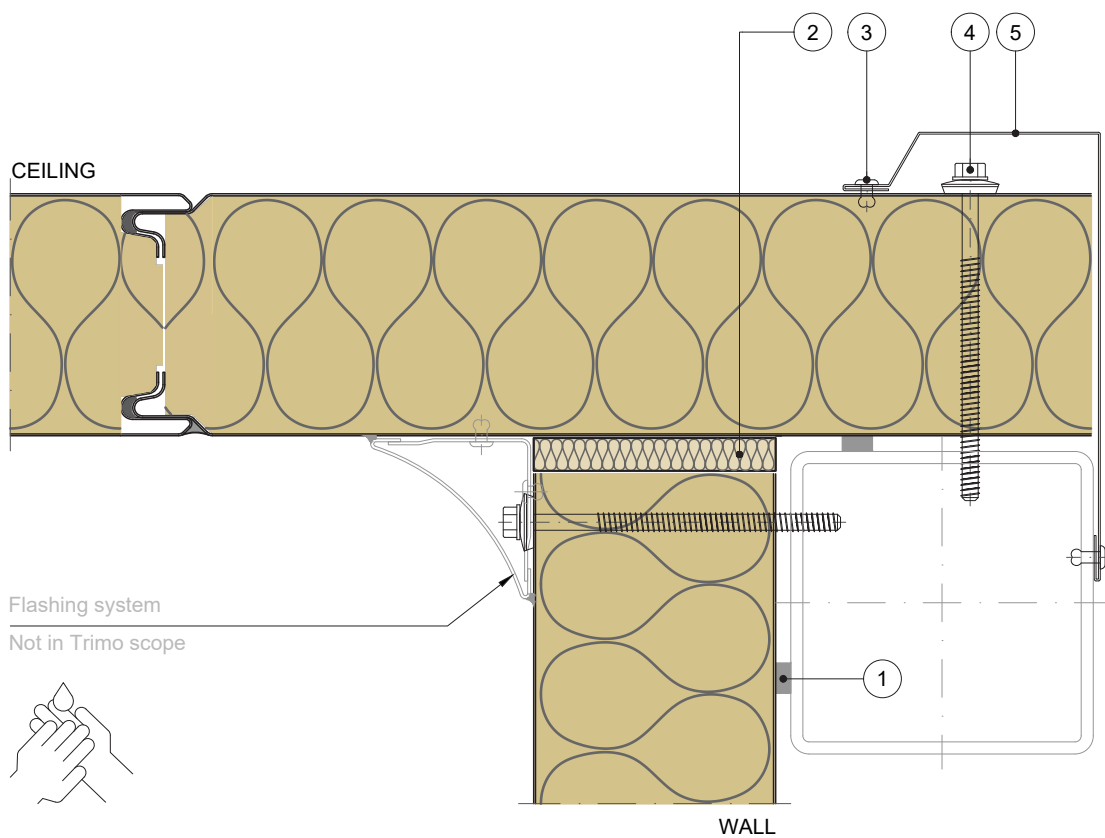
FUNCTION

- FIRE - fire-resistant system
- FOOGIENE - food & hygiene system
- BASE - backing-wall system

APPLICATION

- External Facade
- Internal Wall
- Flat Roof
- External Soffit
- Internal Ceiling
- Pitched Roof

VERTICAL CUT



POS.	ELEMENTS	SCALE: M 1:2.5
1	Sealing tape	
2	Thermal insulation	
3	Blind rivet	
4	Fixing screw	

PARAPET

Trimo Group holds full copyrights on the information and details provided on this media, therefore any unauthorized reproduction and distribution is strictly prohibited.



VERTICAL INSTALLATION

TRIMOTERM FTV

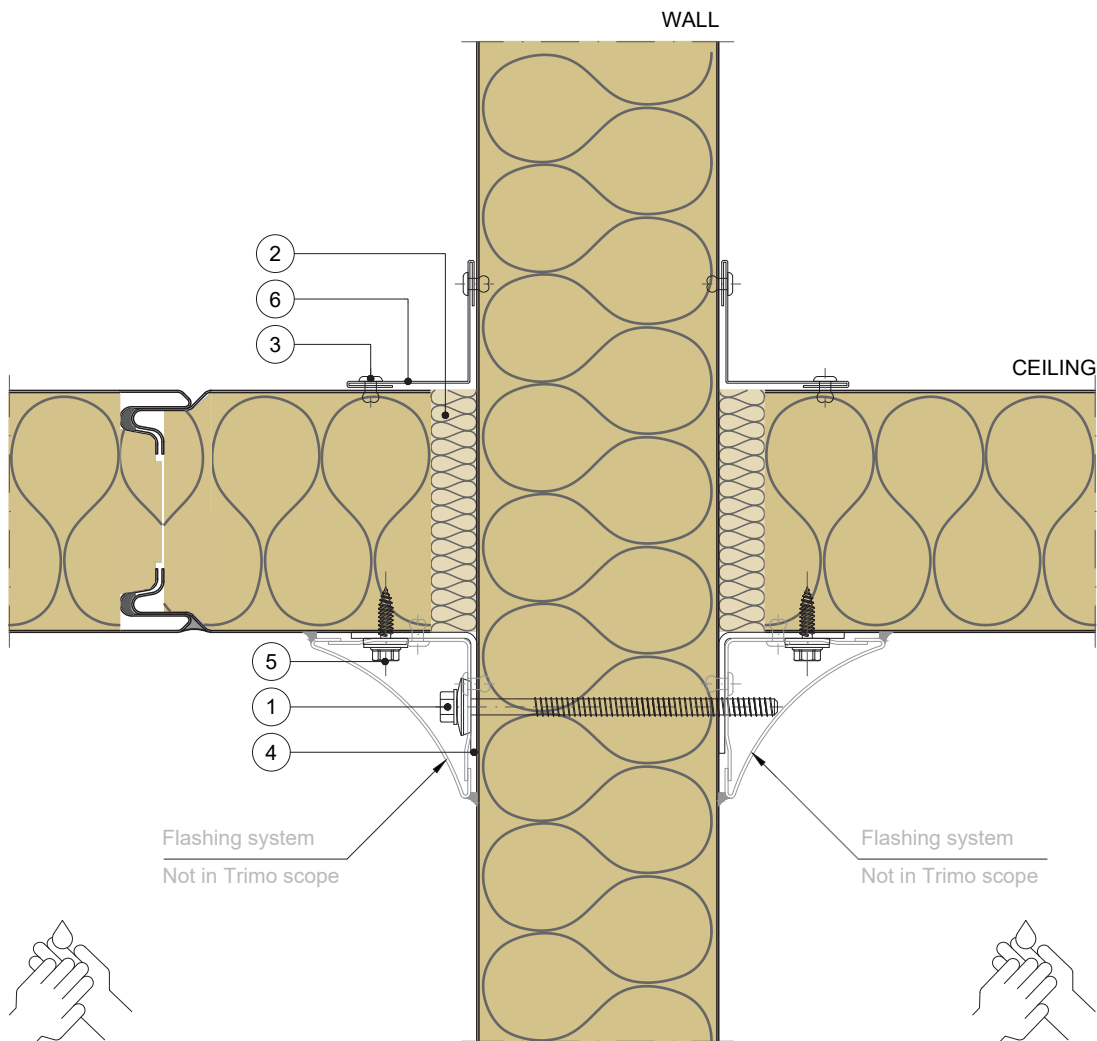
FUNCTION

- FIRE - fire-resistant system
- FOOGIENE - food & hygiene system
- BASE - backing-wall system

APPLICATION

- External Facade
- Internal Wall
- Flat Roof
- External Soffit
- Internal Ceiling
- Pitched Roof

VERTICAL CUT



POS.	ELEMENTS	SCALE: M 1:2.5
1	Fixing screw (long)	
2	Thermal insulation	
3	Blind rivet	
4	Support profile	
5	Fixing screw short	
6	Flashing	



VERTICAL INSTALLATION

TRIMOTERM FTV

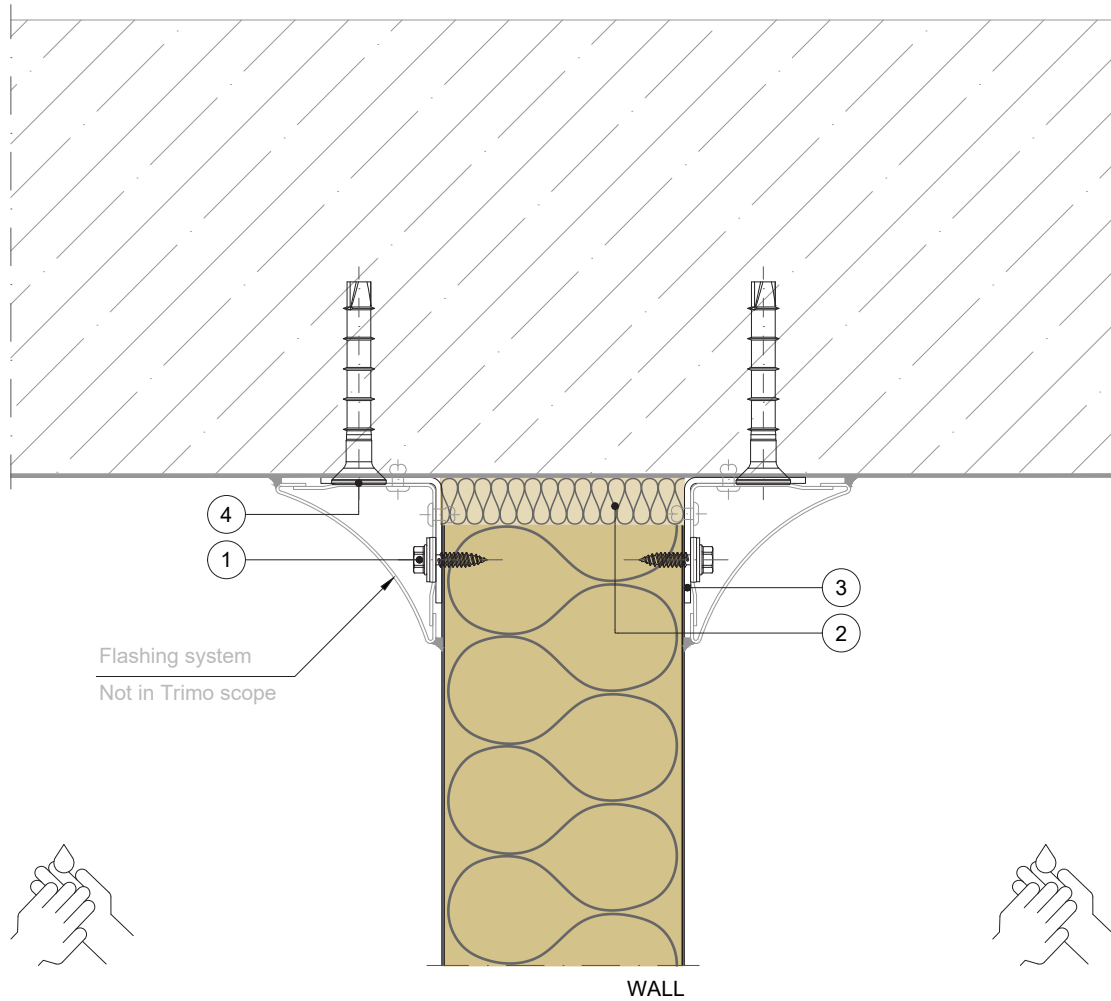
FUNCTION

- FIRE - fire-resistant system
- FOOGIENE - food & hygiene system
- BASE - backing-wall system

APPLICATION

- External Facade
- Internal Wall
- Flat Roof
- External Soffit
- Internal Ceiling
- Pitched Roof

VERTICAL CUT



POS.	ELEMENTS	SCALE: M 1:2.5
1	Fixing screw short	
2	Thermal insulation	
3	Support profile	
4	Metal fixing anchor (depending on material)	

PARAPET

Trimo Group holds full copyrights on the information and details provided on this media, therefore any unauthorized reproduction and distribution is strictly prohibited.



VERTICAL INSTALLATION

TRIMOTERM FTV

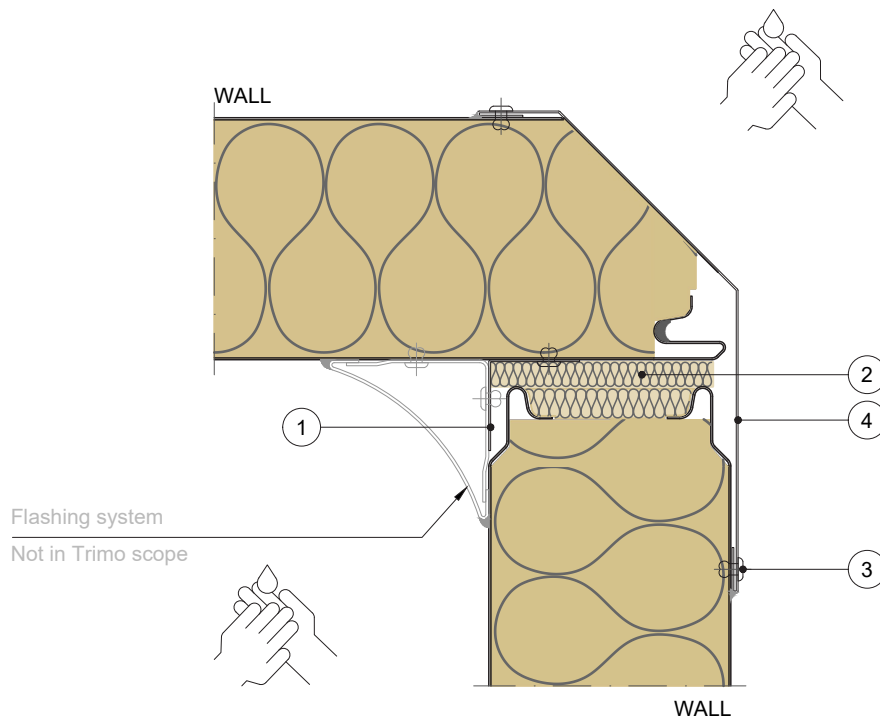
FUNCTION

- FIRE - fire-resistant system
- FOOGIENE - food & hygiene system
- BASE - backing-wall system

APPLICATION

- External Facade
- Internal Wall
- Flat Roof
- External Soffit
- Internal Ceiling
- Pitched Roof

HORIZONTAL CUT



POS.	ELEMENTS	SCALE: M 1:2.5
1	Flashing support	
2	Thermal insulation	
3	Blind rivet	
4	Flashing	

EXTERNAL CORNER

Trimo Group holds full copyrights on the information and details provided on this media, therefore any unauthorized reproduction and distribution is strictly prohibited.



VERTICAL INSTALLATION

TRIMOTERM FTV

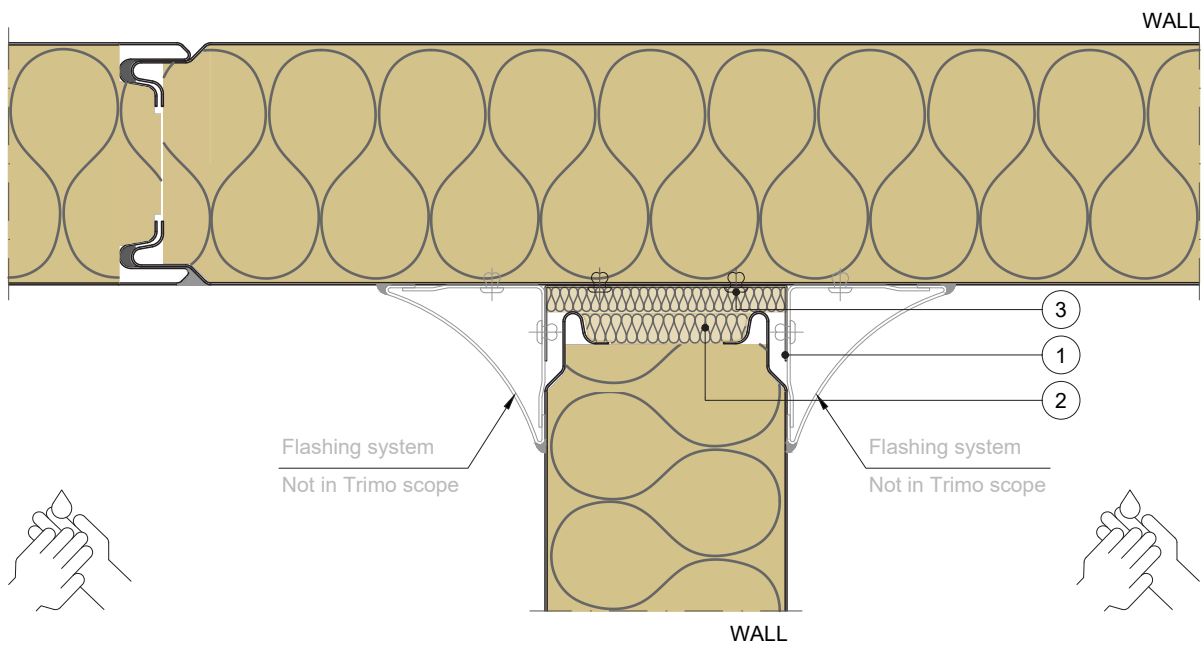
FUNCTION

- FIRE - fire-resistant system
- FOOGIENE - food & hygiene system
- BASE - backing-wall system

APPLICATION

- External Facade
- Internal Wall
- Flat Roof
- External Soffit
- Internal Ceiling
- Pitched Roof

HORIZONTAL CUT



POS.	ELEMENTS	SCALE: M 1:2.5
1	Flashing support	
2	Thermal insulation	
3	Blind rivet	

INTERNAL CORNER

Trimo Group holds full copyrights on the information and details provided on this media, therefore any unauthorized reproduction and distribution is strictly prohibited.



VERTICAL INSTALLATION

TRIMOTERM FTV

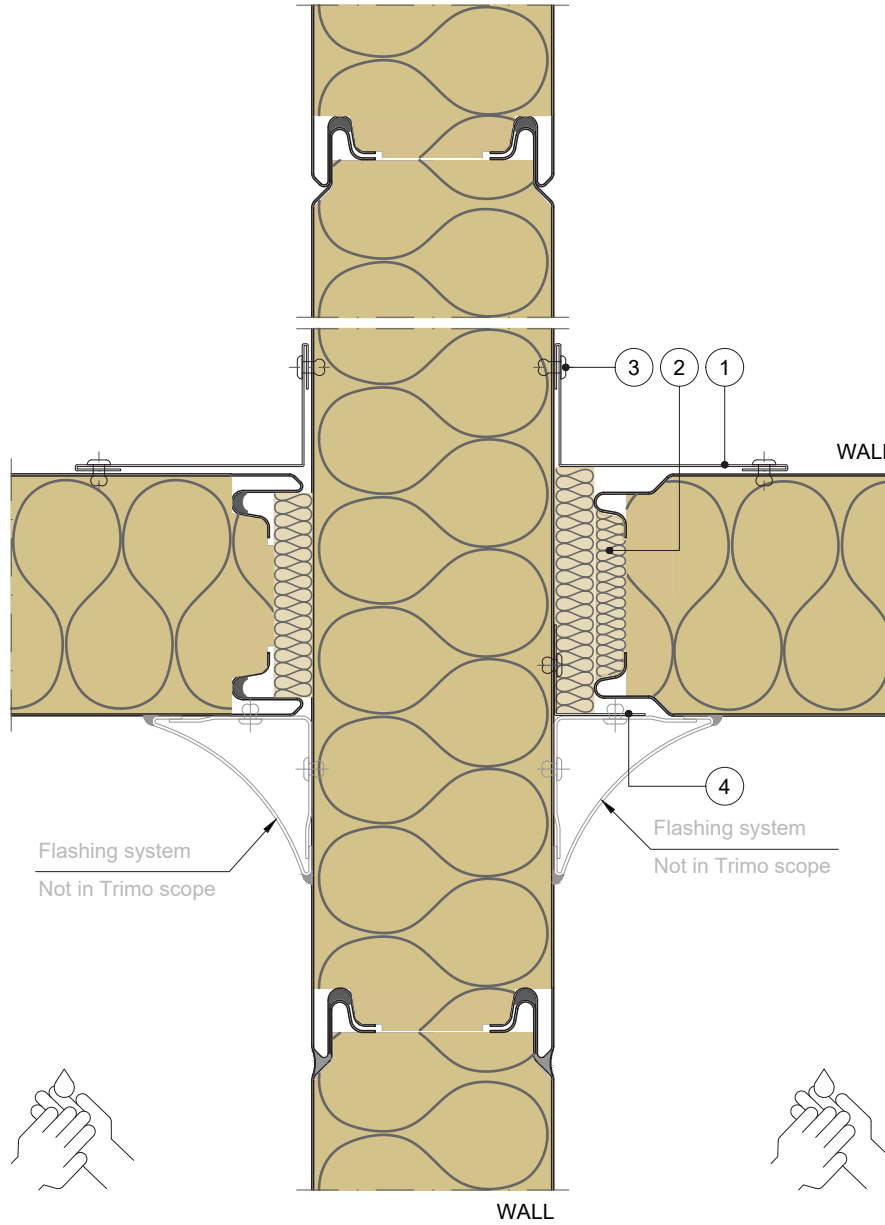
FUNCTION

- FIRE - fire-resistant system
- FOOGIENE - food & hygiene system
- BASE - backing-wall system

APPLICATION

- External Facade
- Internal Wall
- Flat Roof
- External Soffit
- Internal Ceiling
- Pitched Roof

HORIZONTAL CUT



POS.	ELEMENTS	SCALE: M 1:2.5
1	Flashing	
2	Thermal insulation	
3	Blind rivet	
4	Flashing support	

INTERNAL CORNER

Trimo Group holds full copyrights on the information and details provided on this media, therefore any unauthorized reproduction and distribution is strictly prohibited.



**VERTICAL
INSTALLATION**

**TRIMOTERM
FTV**

FUNCTION

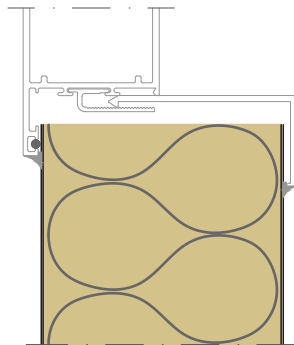
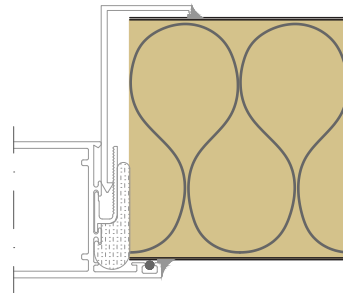
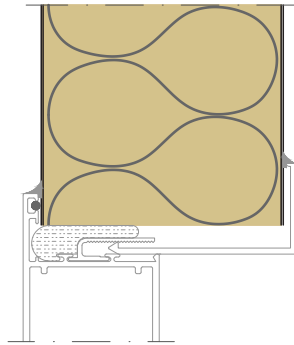
- FIRE - fire-resistant system
- FOOGIENE - food & hygiene system
- BASE - backing-wall system

APPLICATION

- External Facade
- Internal Wall
- Flat Roof
- External Soffit
- Internal Ceiling
- Pitched Roof

VERTICAL CUT

HORIZONTAL CUT



SCALE: M 1:2.5



**VERTICAL
INSTALLATION**

**TRIMOTERM
FTV**

FUNCTION

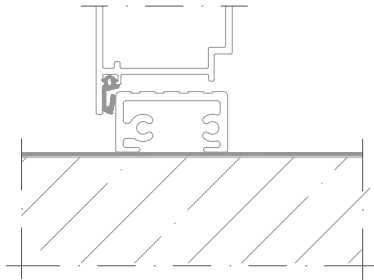
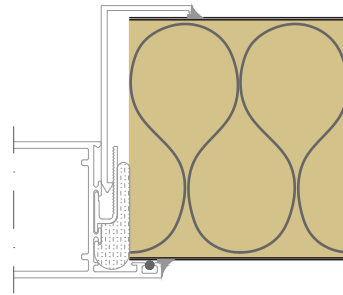
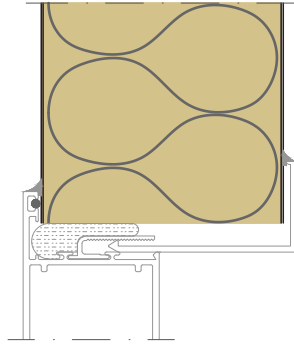
- FIRE - fire-resistant system
- FOOGIENE - food & hygiene system
- BASE - backing-wall system

APPLICATION

- External Facade
- Internal Wall
- Flat Roof
- External Soffit
- Internal Ceiling
- Pitched Roof

VERTICAL CUT

HORIZONTAL CUT



SCALE: M 1:2.5

DOOR

Trimo Group holds full copyrights on the information and details provided on this media, therefore any unauthorized reproduction and distribution is strictly prohibited.



VERTICAL INSTALLATION

TRIMOTERM FTV

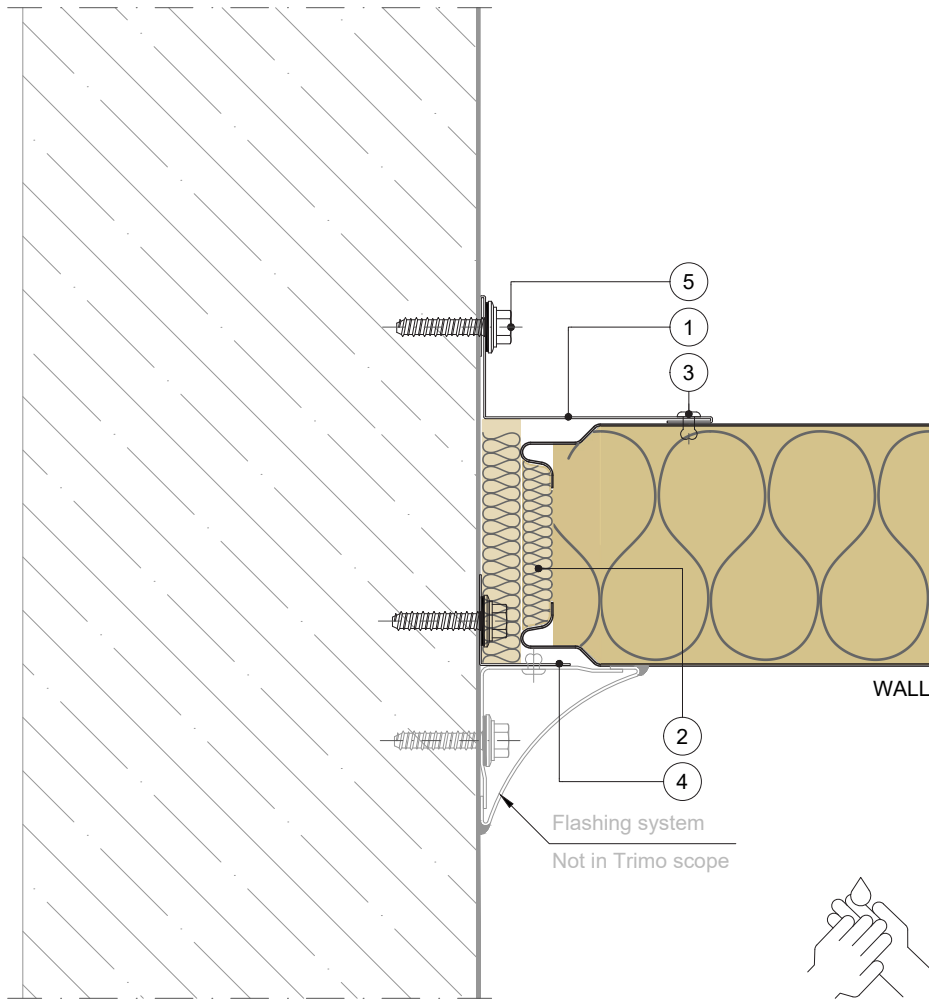
FUNCTION

- FIRE - fire-resistant system
- FOOGIENE - food & hygiene system
- BASE - backing-wall system

APPLICATION

- External Facade
- Internal Wall
- Flat Roof
- External Soffit
- Internal Ceiling
- Pitched Roof

HORIZONTAL CUT



POS.	ELEMENTS	SCALE: M 1:2.5
1	Flashing	
2	Thermal insulation	
3	Blind rivet	
4	Flashing support	
5	Metal fixing screw (depending on material)	

OTHER SYSTEM CONNECTION

Trimo Group holds full copyrights on the information and details provided on this media, therefore any unauthorized reproduction and distribution is strictly prohibited.



VERTICAL INSTALLATION

TRIMOTERM FTV

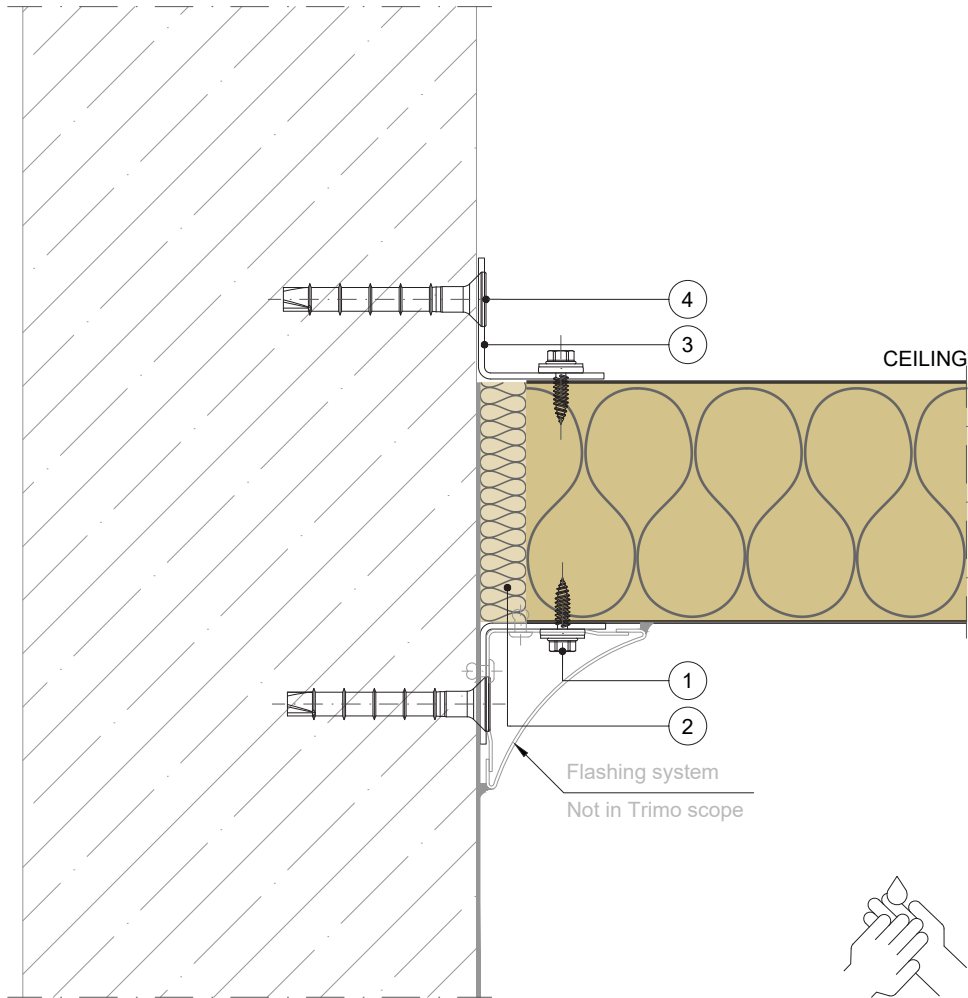
FUNCTION

- FIRE - fire-resistant system
- FOOGIENE - food & hygiene system
- BASE - backing-wall system

APPLICATION

- External Facade
- Internal Wall
- Flat Roof
- External Soffit
- Internal Ceiling
- Pitched Roof

VERTICAL CUT



POS.	ELEMENTS	SCALE: M 1:2.5
1	Fixing screw short	
2	Thermal insulation	
3	Support profile	
4	Metal fixing anchor (depending on material)	

CEILING

Trimo Group holds full copyrights on the information and details provided on this media, therefore any unauthorized reproduction and distribution is strictly prohibited.

TRI
MO **TRIMOTERM**



TRIMO

TRIMO D.O.O.
PRIJATELJEVA CESTA 12
8210 TREBNJE I SLOVENIJA
T: +386 (0)7 34 60 200
F: +386 (0)7 34 60 127
E: TRIMO@TRIMO-GROUP.COM
W: WWW.TRIMO-GROUP.COM

Trimo Group holds full copyrights on the information and details provided on this media, therefore any unauthorized reproduction and distribution is strictly prohibited. Professional care has been taken to ensure that information/details are accurate, correct, complete and not misleading. However, Trimo (including its subsidiaries) does not accept responsibility or liability for errors or information which is found to be misleading. Information/details on this media are for general purposes only. Use of it is on your own initiative and responsibility for compliance with local laws is yours. Any deviations in details and project solutions are user responsibility. In no event, will Trimo be liable for any loss or damage including without limitation, indirect or consequential loss or damage, or any loss or damage whatsoever arising from loss profits arising out of or in connection with, the use of this media. All information issued by Trimo Group is subject to continuous development and information/details contained on this media are current at date of issue. It is user's responsibility to obtain most up-to-date information from Trimo when information/details are used for project.

The last version of the document is available on www.trimo-group.com. Latest version of published document in English language prevails over other translated language documents.

For information about the delivery of panels see Trimo's General conditions. <https://trimo-group.com/en/trimo/general-conditions-of-sale>